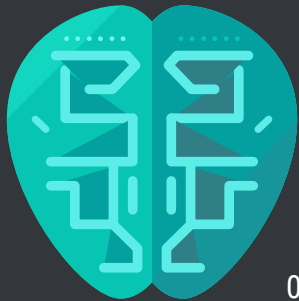


# CRIS ONE PAGE



08-2020

## Teaching Pearl



### A Theory-Informed Group Learning Environment Assessment Tool

"Psychologically safe learning environment is critical to creating desirable team learning behaviors. Check out this tool. Do you have a psychologically safe group learning?"

<https://doi.org/10.4300/JGME-D-19-00748.1>

## Podcast



### Remote e-Work and Distance Learning for Academic Medicine: Best Practices and Opportunities for the Future.

Drawing from direct experience, the authors share applications of their remote e-work for academic physicians.

<https://journalofgme.libsyn.com/>

## Podcast



### You 2.0: Loss and Renewal Hidden Brain

The world offers endless possibilities. Extraordinary things can happen when something is taken away from us. After one chapter is closed, new explorations can extract those same features or traits, your passion, in you from engaging with the new pursuit.

<https://www.npr.org/transcripts/902891952>

## Faculty Development



### Getting Started with building your toolkit for online medical education

University of Dundee: Getting Started series - sharing up-to-date practical advice on how to make the most out of your learning and teaching online

[https://youtu.be/\\_hFuS9GPu-c](https://youtu.be/_hFuS9GPu-c)

## Scholarship Tip



"Solutionism is our tendency to jump to a solution before adequately understanding the nature of a problem. Don't be the Solutionist!"

**McKenney, S. E., & Reeves, T. C. (2020). Educational Design Research: Portraying, conducting, and enhancing scholarship that serves both theory and practice. Medical Education, 1-11.**

<https://onlinelibrary.wiley.com/doi/full/10.1111/medu.14280>

## Educational Events



**MEdEDPortal Workshop** Aug 28th (RSVP: [remijioe@bcm.edu](mailto:remijioe@bcm.edu))

**The Norton Rose Fulbright Awards Workshop** Sep 4 (RSVP: [remijioe@bcm.edu](mailto:remijioe@bcm.edu))

**TCH Educators Orientation** Sept 11 (RSVP: [remijioe@bcm.edu](mailto:remijioe@bcm.edu))

**Annual Showcase of Educational Scholarship** Sept 18 (RSVP: [FacEd@bcm.edu](mailto:FacEd@bcm.edu))

## Important Dates



**AMEE 2020 Virtual Conference, Sept 7-9**  
<https://amee.org/conferences/amee-2020>

**ICRE 2020 Virtual Conference Monthly Series, Sept 25 to May 19, 2021**  
<https://icre.royalcollege.ca/registration/>

**The Norton Rose Fulbright Award Portfolios due, Oct 19**