

IMAGE GALLERY

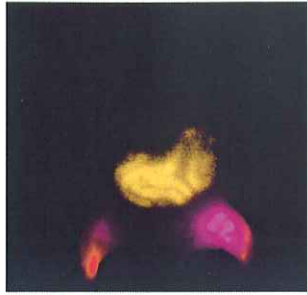
Carestream Molecular Imaging



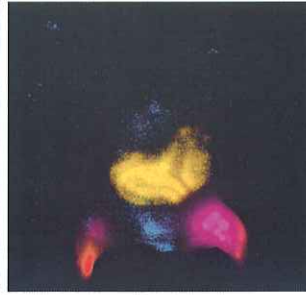
Multispectral Imaging Cube
Fluorescent Image -
Multiple Imaging Agents,
Food, Skin



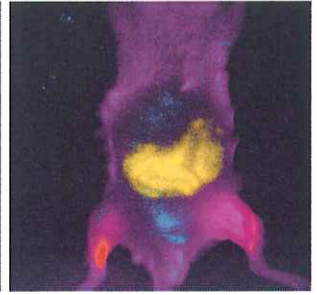
Multispectral
Unmixed KODAK X-SIGHT
650 Nanosphere
and
KODAK X-SIGHT 761 Nanosphere



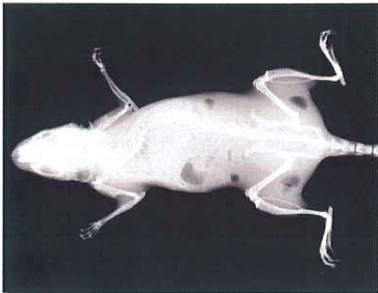
Multispectral
Unmixed KODAK X-SIGHT 650
Nanosphere and
KODAK X-SIGHT 761
Nanosphere and Food



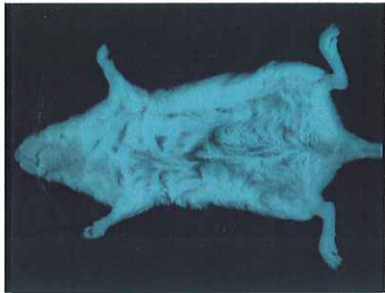
Multispectral
Unmixed KODAK X-SIGHT 650
Nanosphere and
KODAK X-SIGHT 761
Nanosphere, Food
and Bladder



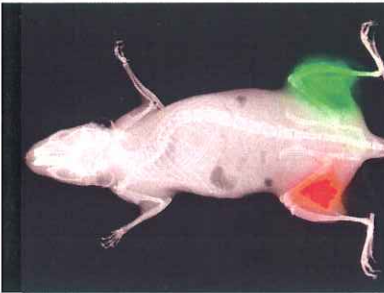
Multispectral
Unmixed KODAK X-SIGHT
650 Nanosphere and
KODAK X-SIGHT
761 Nanosphere, Food,
Bladder, Skin and Fur



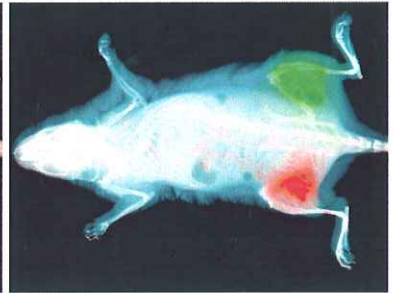
Multimodal Imaging:
X-ray only



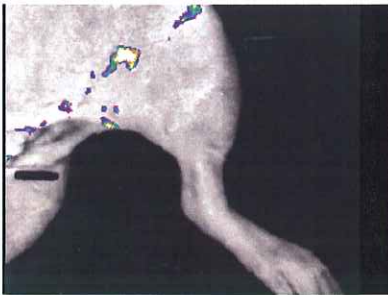
Multimodal Imaging:
Reflectance



Multimodal Imaging:
Multispectral unmixed
fluorescent signals



Multimodal Imaging:
4 Layer Composite



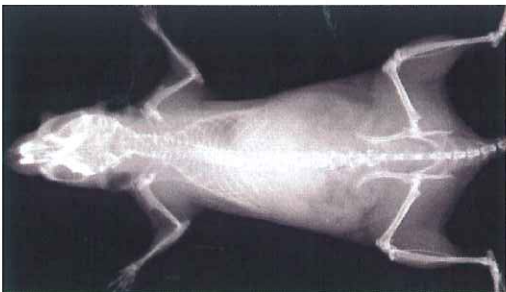
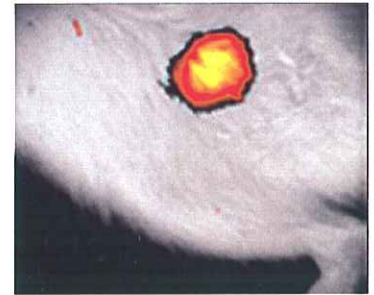
Precise multimodal overlay
Overlay of optical signal
on reflected image



Precise multimodal overlay
Overlay of optical signal
on X-ray image

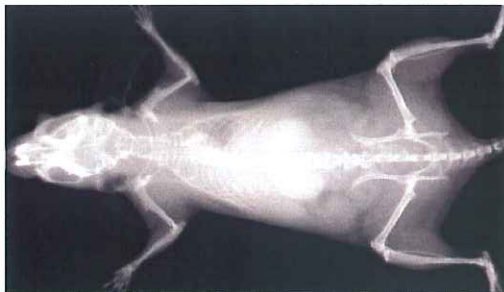


Rat hind leg - KODAK X-SIGHT 761
overlay on X-ray and white light image.



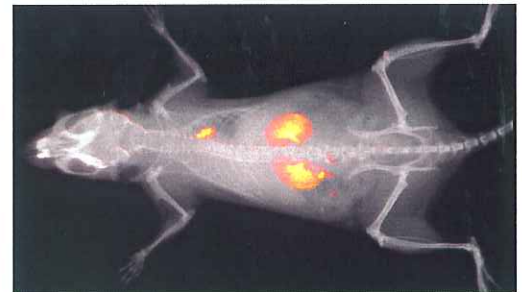
Pre-Injection X-ray

Subject: Live mouse
X-ray Energy: 35 kVp
FOV: 100 mm f-stop: 2.5
Exposure Time: 3 minutes
Courtesy of: USC



Post-Visipaque Contrast Agent Injection X-ray

Subject: Live mouse
X-ray Energy: 35 kVp
FOV: 100 mm f-stop: 2.5
Exposure Time: 3 minutes
Courtesy of: USC



**Pseudocolor Subtracted Image
Overlaid on Pre-Injection Image**

Concentration of signal in heart and kidneys